

PerfectMMS

Redefining Energy

Solar Module Mounting Structures



Reliable Module Mounting Structure Solutions for Solar Excellence



Scan the QR Code
to Visit our Website

For more enquiries, please call: +91 8587870233
Email: vijay@shahpower.in

Plot No. 10, & 32A, 32(A) (P), 33, 34, 35, 36, 37, 38, 39, 40, 41, 42,
Karur Industrial Area, P.B. Road, Davangere – 577 006, Karnataka

www.perfectrack.in

Built on Experience Designed for Perfection

With decades of engineering excellence in infrastructure - from telecom towers and transmission lines to solar structures, hybrid wind turbine systems, and large-scale EPC projects - Shah Power Pvt. Ltd. [Formerly Shah Infra Towers Pvt. Ltd.] has built a legacy of perfect reliability and engineering excellence.

Shah Power delivers high-performance Solar Module Mounting Structures (MMS) for utility-scale and commercial solar projects. Designed for strength, durability, and ease of installation, our MMS solutions withstand diverse climatic conditions while perfectly supporting solar modules.

Solar Module Mounting Structure

Located near Bengaluru, Shah Power Pvt. Ltd. [Shah Infra Towers Pvt. Ltd.] is equipped with advanced cold roll forming units - one at **Dobbaspet (50 Kms. from Bengaluru)**, second at **Chacharwadi (40 kms. from Ahmedabad)** and third at **Davangere (Karnataka)** with in-house fabrication and galvanizing capabilities to cater to utility-scale and commercial solar projects across India

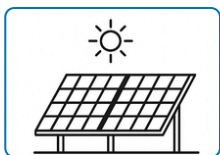
Comprehensive Manufacturing Capabilities

- Cold-formed Steel Profiles for solar mounting
- Total installed capacity of 4500 mt / month.
- In-house design and engineering team for customization and optimization
- Coating options: Bare Galvanizing, Pre-Galvanized, and Hot-Dip Galvanized (HDG)
- Galvanization thickness: up to 120 microns (HDG)
- Material grade : HR, Pre Galvanized material, Galvalume, ZAM with 250 to 550 Mpa
- Thickness range: 1.2 mm to 8 mm
- Length: up to 12,000 mm

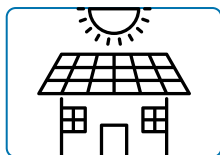
Total Production Capacity for
Module Mounting Structures -
MMS Including Bengaluru and
Ahamadabad plant

**60,000
MT/Anm**

Built for Every Solar Scenario



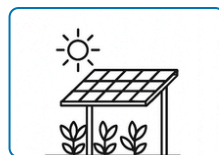
Ground based module
mounting structure



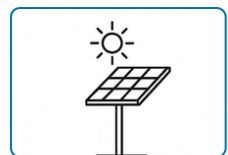
Roof top module
mounting structure



Shed mounting
structures



Agrivoltaics



Pole mounting
structures

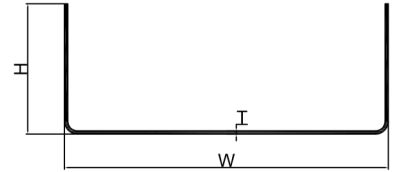
Proven Standards.
Trusted Certifications.



Products

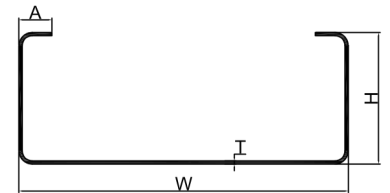
C-TYPE SECTION | PART NO - 1 SOLAR

DESCRIPTION	MINIMUM SIZE	MAXIMUM SIZE	LENGTH
W	40MM	250MM	UP TO 12 METERS
H	40MM	100MM	
T	0.8MM	2.5MM	
W	60MM	300MM	LESS THAN 4 METERS
H	40MM	100MM	
T	2MM	6MM	



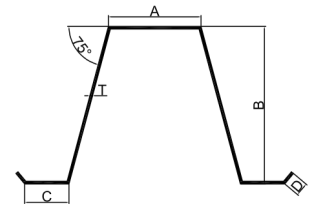
LIP POST SECTION | PART NO - 2 SOLAR

DESCRIPTION	MINIMUM SIZE	MAXIMUM SIZE	LENGTH
W	60MM	250MM	UP TO 12 METERS
H	40MM	100MM	
A	10MM	25MM	
T	1.2MM	2.5MM	
W	60MM	300MM	LESS THAN 4 METERS
H	40MM	100MM	
A	20MM	30MM	
T	2MM	6MM	



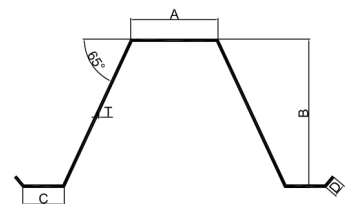
HAT PROFILE - 75° | PART NO - 3 SOLAR

DESCRIPTION	MINIMUM SIZE	MAXIMUM SIZE
A	30MM	90MM
B	40MM	150MM
C	15MM	40MM
D	5MM	12MM



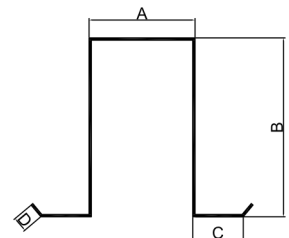
HAT PROFILE - 65° | PART NO - 4 SOLAR

DESCRIPTION	MINIMUM SIZE	MAXIMUM SIZE
A	30MM	90MM
B	40MM	150MM
C	15MM	40MM
D	5MM	12MM



HAT PROFILE - 90° | PART NO - 5 SOLAR

DESCRIPTION	MINIMUM SIZE	MAXIMUM SIZE
A	30MM	90MM
B	40MM	150MM
C	15MM	40MM
D	5MM	12MM



To ensure perfectly hassle-free installation and minimize on-site wastage or rework, we supply purlins in pre-punched, cut-to-length sizes tailored to customer specifications and drawings.

We are open for Global Business...

Building on its proven expertise in delivering globally recognized infrastructure for telecom and transmission networks, Shah Power Pvt. Ltd. brings the same commitment to quality and engineering excellence to PerfectMMS - and welcomes global partners to join this journey toward renewable energy structures.




Marketing office:

#3, D.No.201, 2nd Floor, 9th
Avenue Business Park, 5th Main,
Chamrajpet, Bengaluru - 560018

Dabaspet - Bengaluru Plant

Marketing office: Survey No.32, No.147/3/32/3,
Honnehalli Gramapanchayat,
Sompura Hobli, Nelamangala
Taluk, Kengal Kempohalli Colony, Dabaspet
Industrial Area, Bengaluru - 562111

Contact Us

 vijay@shahpower.in

 +91 8587870233

Head office & Factories:

Plot No. 10, & 32A, 32(A) (P), 33, 34,
35, 36, 37, 38, 39, 40, 41, 42,
Karur Industrial Area, P.B. Road,
Davangere - 577 006, Karnataka

Ahmedabad, Gujarat

Plot No. B12A, B14, B15, B16, B17, B18, B19,
Paradise 1 Park, Sarkhej Bavla Road,
Chacharavadi Vasna, Sanand, Changodar,
Ahmedabad, Gujarat, 382213

 eaceo@shahpower.in

 +91 9148935036.

PerfectMMS

Redefining Energy



Follow PerfectTrack
on LinkedIn

www.perfecttrack.in | www.shahpower.in